



*The Professional's Edge Since 1936*



# ***2025 PRODUCT LIST***

**Professional Cleaning Tools**

**ETTORE.COM**

# TABLE OF CONTENTS

About Ettore .....	1
Window Cleaning Tools .....	2
Rubber .....	2
Channels .....	4
Squeegee Handles .....	6
Backflip .....	10
Sleeves & T-Bars .....	12
Buckets .....	14
Holsters .....	15
Soaps & MicroFiber Cloths .....	16
Squeegee-Off Soap .....	16
Scrapers & Floor Scrapers .....	18
Poles & Pole Accessories .....	20
Clean Up Tools .....	22
Dusters .....	24
Brushes & Accessories .....	28
Floor Squeegees .....	29
Auto Cleaning .....	33
Kits .....	34
Point-Of-Purchase Displays .....	36
Aquaclean .....	40
Index .....	47



**Prop 65 Warning:** Some of our products can expose you to chemicals including lead, which are known to the state of California to cause cancer and birth defects or other reproductive harm. Please contact customer service for more information.

Terms and Conditions: All prices are F.O.B. Alameda, CA and are subject to change without notice. Minimum order is \$250 net. New account minimum \$1,000. Terms are net 30 days from invoice/shipping date. Orders exceeding \$1,000 net will be shipped freight free within the continental USA (excluding Aquaclean). Oversized poles (1695, 1699, and 44232) must be shipped with an order of \$1,500 or more. All shipments will be made in standard packaging; no broken cases allowed. Claims for shortages must be made in writing within 10 days of receipt of invoice or goods. Returns must have prior written authorization and may be subject to a 15% restocking charge.

ETTORE PRODUCTS COMPANY

## Reinventing Window Cleaning

Ettore Steccone invented the window squeegee over eighty-five years ago in Oakland, California. His T-shaped tool, manufactured of brass with a single precision slit rubber blade, dried windows virtually streak-free and became the new standard in cleaning glass.

Over the years Ettore Products continues to use the same proven—and highly guarded—rubber compound that made us the original leader. We also take the time to build, test, and spec every part to ensure consistent high quality.

Our premium level of customer service is evidenced by the fact that we're consistently recognized with manufacturing and service awards in every category. We back *everything* we make with an *unconditional* guarantee. If for any reason you have a problem with a product, we do *whatever it takes* to make it right—no questions asked.

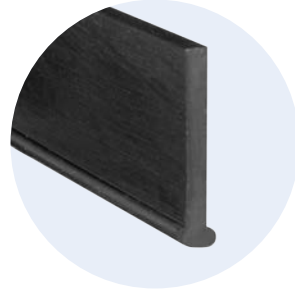
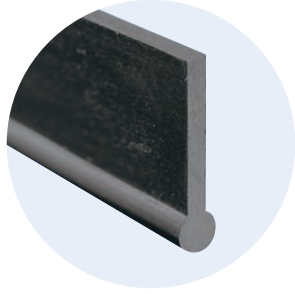
Getting the perfect finish starts with using the right tools.



*The Professional's Edge Since 1936*



# Rubber



**World Famous Master® Rubber** 🇺🇸  
Hand inspected for the highest quality precision edge available. Unconditionally guaranteed to deliver flawless performance.

MODEL	CODE	PER CASE
6" (15cm)	1397	12
8" (20cm)	1402	12
10" (25cm)	1407	12
10" (25cm)	1408	144
12" (30cm)	1412	12
12" (30cm)	1413	144
14" (35cm)	1417	12
14" (35cm)	1418	144
16" (40cm)	1422	12
16" (40cm)	1423	144
18" (45cm)	1427	12
18" (45cm)	1428	144
20" (50cm)	1432	12
20" (50cm)	1433	144
22" (55cm)	1438	12
22" (55cm)	1439	144
24" (60cm)	4988	12
24" (60cm)	49880	144
30" (75cm)	4989	12
30" (75cm)	49890	144
36" (90cm)	1443	12
36" (90cm)	1444	144



**T-Shaped Rubber** 🇺🇸  
Ettore T-Shaped rubber is designed for the extruded channel to reduce flex in longer channels for optimal, streak free results.

- Specially designed rubber fits all "T" shaped channels
- The same Ettore rubber blades to give you confidence and streak free results
- Multiple sizes to fit all of your needs

MODEL	CODE	PER CASE
14" (35cm)	1497	12
18" (45cm)	1503	12
22" (55cm)	1509	12
24" (60cm)	1512	12
30" (75cm)	1518	12
36" (90cm)	1521	12



**Brass End Clips for All Window Squeegees** 🇺🇸  
Clips can be used on brass, stainless and aluminum channels.

MODEL	CODE	PER CASE
Clips	1253	12

Scan the QR Code to learn more about Ettore Rubber!



*For over 85 years, Ettore has combined the best materials with a passion for perfection to create the world's best squeegee rubber, right here in the U.S.A.!*



## Satisfaction Guarantee

Ettore takes pride in hand-inspecting each blade before it is shipped, ensuring the highest quality, precision edge available. Like all of our products, it's unconditionally guaranteed to deliver nothing less than flawless performance.



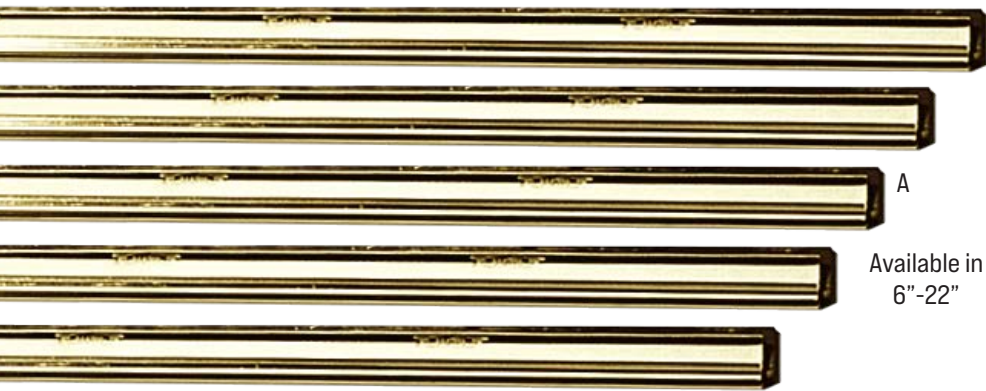
"The quality is the best for us because it lasts longer. We've definitely tried other brands but we keep coming back to Ettore."

**Jorge Aguilar**  
Empire Highrise USA - Kansas City, MO

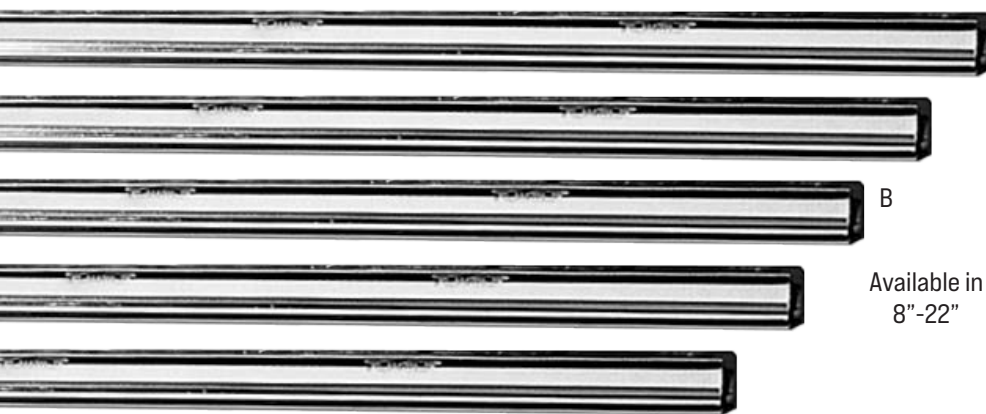


# Channels

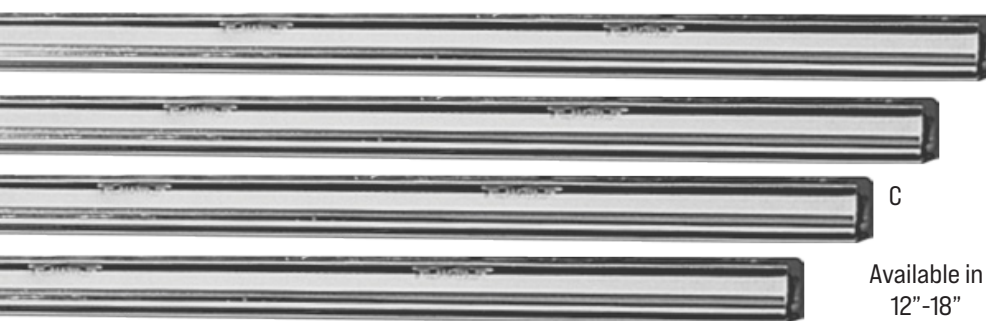
Each individual channel is hand inspected assuring the absolute highest quality and flawless performance.



Available in 6"-22"



Available in 8"-22"



Available in 12"-18"

## A. Master™ Brass Clipped Channel with Rubber

Original brass channel, hand inspected for exceptional quality control.

MODEL	CODE	PER CASE
6" (15cm)	1119	12
8" (20cm)	1123	12
10" (25cm)	1127	12
10" (25cm)	1128	36
12" (30cm)	1131	12
12" (30cm)	1132	36
14" (35cm)	1135	12
14" (35cm)	1136	36
16" (40cm)	1140	12
16" (40cm)	1141	36
18" (45cm)	1144	12
18" (45cm)	1145	36
20" (50cm)	1148	12
22" (55cm)	1152	12
22" (55cm)	1153	36

## B. Master™ Stainless Steel Clipped Channel with Rubber

Bright annealed stainless steel channel is strong and corrosion resistant. Hand inspected.

MODEL	CODE	PER CASE
8" (20cm)	1161	12
10" (25cm)	1165	12
12" (30cm)	1169	12
14" (35cm)	1173	12
16" (40cm)	1177	12
18" (45cm)	1181	12
20" (50cm)	1184	12
22" (55cm)	1188	12

## C. Aluminum Channel with Rubber

Featherweight alternative to traditional channel with uncompromising performance. Hand inspected.

MODEL	CODE	PER CASE
12" (30cm)	1912	12
14" (35cm)	1914	12
16" (40cm)	1916	12
18" (45cm)	1918	12

# Super Channel



**Super Channel**  
Extruded gold anodized channel in longer lengths designed to reduce flex for optimal results.

MODEL	CODE	PER CASE
14" (35cm)	11010	12
18" (45cm)	11020	12
22" (55cm)	11022	12
24" (60cm)	11030	12
30" (75cm)	11040	12
36" (90cm)	11050	12

Super Channel can be made to work with all of our Quick Release Handles



## Clean Large Glass Fast

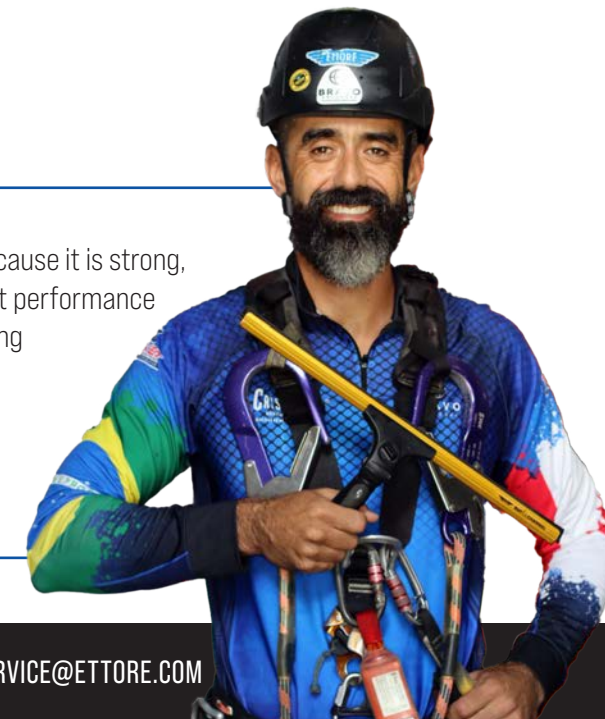
Invented over 20 years ago, Super Channel is Ettore rubber in a lightweight aircraft grade aluminum channel. It's designed to reduce flex which allows for larger and quicker passes on glass, both forward and backwards.

Scan the QR Code to see the Super Channel in action!



"I like the Super Channel because it is strong, resistant and provides great performance when cleaning windows using rope access."

**Vitor Viana Cardoso**  
CS Vertical Solutions - Brazil



# Squeegee Handles



**Master™ Brass Handle** Manufactured of tempered solid brass – the “Original” handle.

MODEL	CODE	PER CASE
Brass	1324	12
Brass	1325	24



**Master™ Brass Quick Release Handle** Manufactured of tempered solid brass – Quick Release allows for quick channel changing.

MODEL	CODE	PER CASE
Quick Release™ w/ Rubber Grip	1339	12



**Master™ Stainless Steel Handle** Stainless Steel Handles offer light weight and long lasting “good looks”.

MODEL	CODE	PER CASE
Master	1330	12
Master w/ Rubber Grip	1331	12



**Master™ Stainless Quick Release Handle** Stainless Steel Handles offer light weight and long lasting “good looks”.

MODEL	CODE	PER CASE
Quick Release™ w/Rubber Grip	1343	12



**Aluminum Handle** The “Original” squeegee handle now in aluminum. 60% lighter than brass or stainless.

MODEL	CODE	PER CASE
Aluminum	1335	12



**Aluminum Quick Release Handle** The “Original” squeegee handle now in aluminum. 60% lighter than brass or stainless.

MODEL	CODE	PER CASE
Quick Release™ w/Rubber Grip	1405	12



**Replacement Grip**  
Rubber ergonomic grip.

MODEL	CODE	PER CASE
Replacement Grip	3003	6



**Ledge-Eze™ Handle**  
Designed with extra reach. Great for deep ledges and window frames. Foam grip.

MODEL	CODE	PER CASE
Brass	1345	6
Stainless	1355	6

Scan the QR Code to learn more about each Squeegee Handle!



*As the market leader, Ettore builds, tests and specs every handle to meet the needs of professionals around the world.*

All handles work great with Ettore Rea-c-h Poles.



“While growing and scaling my company, I learned very quickly that tools and equipment had to be standardized. Choosing Ettore for our tool line was easy. Their product line covers everything we need as professional window cleaners.”

**Sheila Smeltzer**  
A+ Pro Services Inc. - Charlotte, NC



# Squeegee Handles



## Contour Pro+™ Handle

Re-engineered with a high-strength polymer material. Head angles from 0-50 degrees. Four time-saving features in one amazing squeegee.

MODEL	CODE	PER CASE
Handle	1011	6
Super Channel	1012	6



## Pro+™ Handle

Ergonomic design with quick release and no-slip grip for ultimate comfort.

MODEL	CODE	PER CASE
Handle	2020	12



## Super System Handle

Ergonomic design with quick release and no-slip grip for ultimate comfort.

MODEL	CODE	PER CASE
Super System	1640	12
Super Channel	13851	12



## Zero Degree Super System Handle

Zero Degree handle is great for overhead skylights and glass helping to reduce fatigue.

MODEL	CODE	PER CASE
Handle	1645	12



## ProGrip™ Handle

Large rubberized grip for extended use without fatigue. Quick release.

MODEL	CODE	PER CASE
Handle	2610	12



## Super Channel Handle

Stainless steel handle specifically designed for Super Channel.

MODEL	CODE	PER CASE
Quick Release™ w/Rubber Grip	13930	12



## Brass Quick Release Squeegee Handle Kit

Convert your existing brass handles to Quick Release.

MODEL	CODE	PER CASE
Quick Release Kit	1365	3



## Pro+ Quick Release Squeegee Handle Kit

Convert your existing Pro+ handles to Quick Release.

MODEL	CODE	PER CASE
Pro+ Quick Release Kit	1368	3



## Super Channel Quick Release Squeegee Handle Kit

Converts Super Channel handles to Quick Release.

MODEL	CODE	PER CASE
Super Channel Kit	1391	3

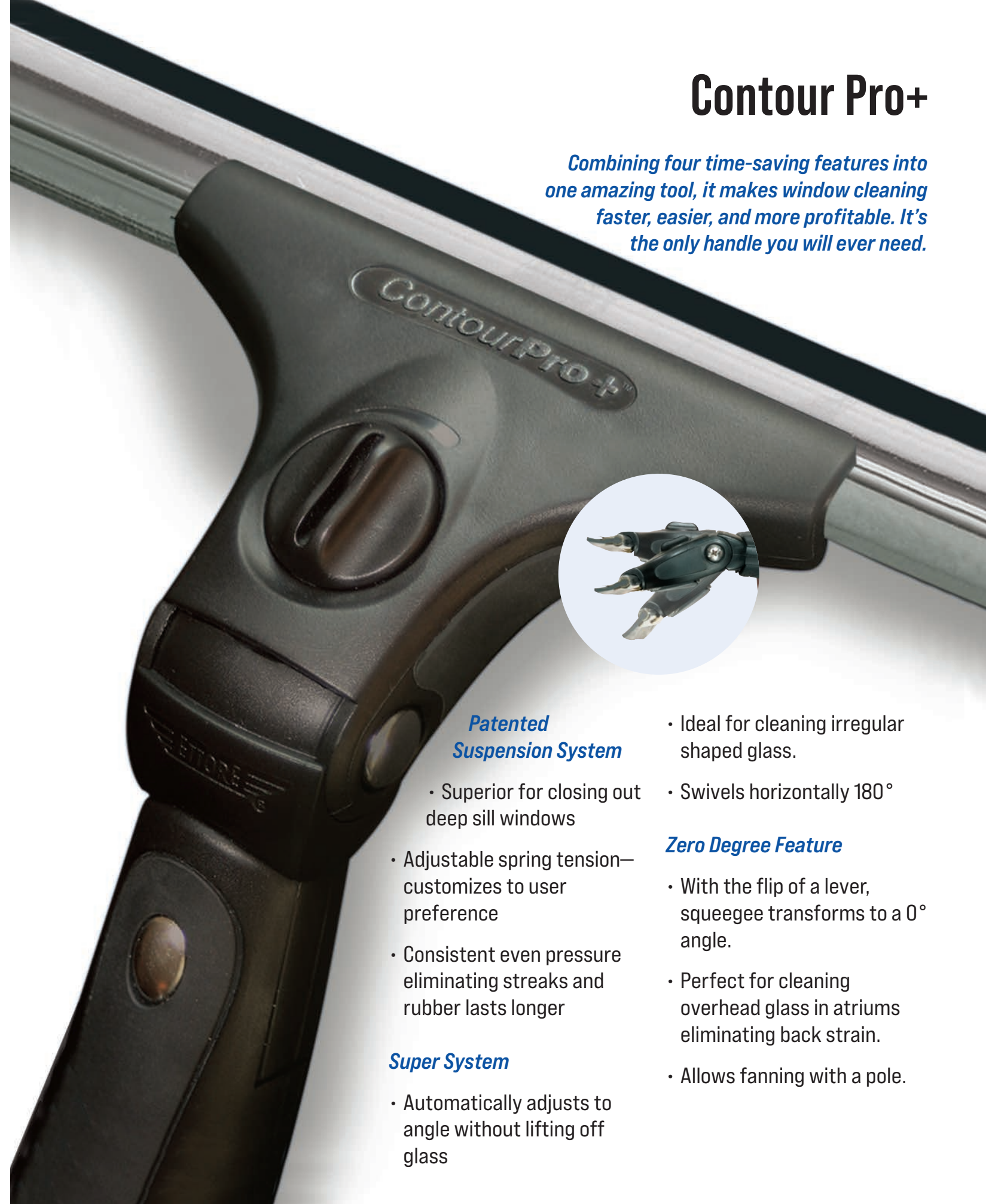


## Backplate for Clipless Channel

MODEL	CODE	PER CASE
Clipless Kit	52340	3

# Contour Pro+

Combining four time-saving features into one amazing tool, it makes window cleaning faster, easier, and more profitable. It's the only handle you will ever need.



## Patented Suspension System

- Superior for closing out deep sill windows
- Adjustable spring tension—customizes to user preference
- Consistent even pressure eliminating streaks and rubber lasts longer

## Super System

- Automatically adjusts to angle without lifting off glass

- Ideal for cleaning irregular shaped glass.

- Swivels horizontally 180°

## Zero Degree Feature

- With the flip of a lever, squeegee transforms to a 0° angle.
- Perfect for cleaning overhead glass in atriums eliminating back strain.
- Allows fanning with a pole.

# Complete Squeegees



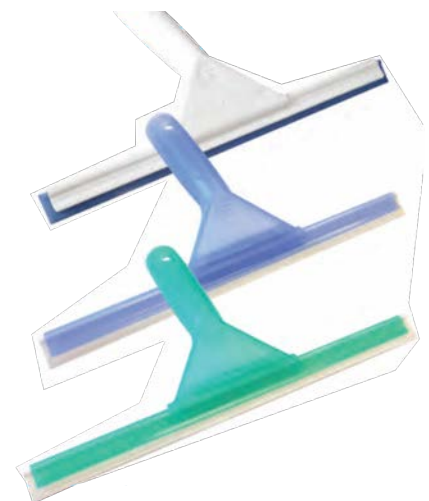
**Master™ Brass Squeegee, Complete** 🇺🇸  
The Original Squeegee built to precision tolerances for perfect balance and weight.

MODEL	CODE	PER CASE
12" (30cm)	1013	12
14" (35cm)	1017	12
16" (40cm)	1021	12
18" (45cm)	1025	12



**Aluminum Squeegee, Complete** 🇺🇸  
The "Original" squeegee now in aluminum. 60% lighter than brass or stainless.

MODEL	CODE	PER CASE
12" (30cm)	3212	12
14" (35cm)	3214	12
16" (40cm)	3216	12
18" (45cm)	3218	12



**Pro+™ Squeegee, Complete** 🇺🇸  
Ergonomic handle design with quick release stainless channel and no-slip grip.

MODEL	CODE	PER CASE
12" (30cm)	2012	12
14" (35cm)	2014	12
16" (40cm)	2016	12
18" (45cm)	2018	12



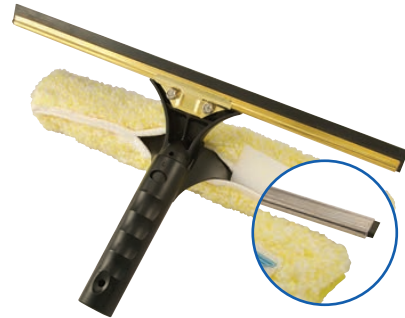
**All Purpose Squeegee, Complete**  
Re-designed with comfort grip handle. An inexpensive alternative that provides quality results. Channel and rubber not replaceable.

MODEL	CODE	PER CASE
06" (15cm)	17066	12
08" (20cm)	17008	12
10" (25cm)	17010	12
12" (30cm)	17012	12
14" (35cm)	17014	12
16" (40cm)	17016	12
18" (45cm)	17018	12

**Shower Sweep**  
Prevents water spotting and build-up of soap scum on shower doors and tile.

MODEL	CODE	PER CASE
White	14100	12
Aqua	15101	12
Purple	15102	12
Assorted	14125	12

# BackFlip



**BackFlip™**  
Please note: On BackFlip models, squeegee is two inches longer than washer. Can be used together in two positions or comes apart to use separately.

## Brass

MODEL	CODE	PER CASE
10" (25cm)	71100	6
14" (35cm)	71140	6
18" (45cm)	71180	6

## Stainless

MODEL	CODE	PER CASE
10" (25cm)	71101	6
14" (35cm)	71141	6
18" (45cm)	71181	6



## BackFlip™ Handle

MODEL	CODE	PER CASE
Brass	5363	6
Stainless	5362	6

## BackFlip – Four Tools in One!

The perfect balance of speed and performance. Equipped with the Click-Lock feature, you can use the tools individually or in time-saving combinations.



**Combo Tool**  
The BackFlip combines our Quick Release Squeegee with our Golden Glove Washer. Squeegee available in Brass or Stainless.



**One Pass Wash & Wipe**  
The faster way to clean windows! The Golden Glove Washer cleans the glass and the Squeegee dries in just one pass.



**Heavy-Duty Washer**  
The specially designed T-bar has a handy, easy fitting grip. The shape has been designed to hold more solution.



**Quick Release Handle**  
Available in Brass and Stainless Steel makes changing channels easier than ever.

Scan the QR Code to see the BackFlip in action!



"This tool changed my life! Being in the desert the benefit of this tool is the fact that there is a full golden glove on it. It has the best water retention which is important for working in the heat. Being able to wet the glass then use the squeegee immediately after makes all the difference when poling traditionally."

**Gabriel Gutierrez**  
Gabe's Spotless Window Cleaning - Tucson, AZ



# Sleeves & T-Bars



**Advanced Microfiber Sleeve**  
Microfiber technology in a dense high pile sleeve with a scrubber edge. Lint free, superior water retention.

MODEL	CODE	PER CASE
10" (25cm)	40010	6
14" (35cm)	40014	6
18" (45cm)	40018	6
22" (55cm)	40022	6



**Mighty™ Washer Sleeve**  
Economical alternative with great performance.

MODEL	CODE	PER CASE
10" (25cm)	52010	12
14" (35cm)	52014	12
18" (45cm)	52018	12



**Pro+ Super System T-Bar**  
Lightweight construction with rubberized grip.

MODEL	CODE	PER CASE
10" (25cm)	1610	6
14" (35cm)	1614	6
18" (45cm)	1618	6
22" (55cm)	1622	6

**"Taper T" T-Bar**  
High impact plastic with ergonomic grip.

MODEL	CODE	PER CASE
10" (25cm)	1957	6
14" (35cm)	1959	6
18" (45cm)	1961	6



**Porcupine™ Sleeve**  
Heavy duty, double-action sleeve interwoven with thousands of flexible bristles for tough jobs.

MODEL	CODE	PER CASE
14" (35cm)	58014	6
18" (45cm)	58018	6
22" (55cm)	58022	6



**Golden Glove™ Sleeve**  
Our most popular sleeve with extra heavy pile and double seams is built to last. With scrubber ends for extra cleaning power.

MODEL	CODE	PER CASE
10" (25cm)	51010	6
14" (35cm)	51014	6
18" (45cm)	51018	6
22" (55cm)	51022	6



**Pro+ T-Bar**  
Lightweight aluminum and polymer construction for prolonged use without fatigue.

MODEL	CODE	PER CASE
10" (25cm)	4310	6
14" (35cm)	4314	6
18" (45cm)	4318	6
22" (55cm)	4322	6



**Dura 2™ Sleeve**  
Holds more water, covers more area. With dual scrubber ends for extra cleaning power.

MODEL	CODE	PER CASE
14" (35cm)	1880	6
18" (45cm)	1883	6
22" (55cm)	1886	6



**Golden Glove™ Washer, Complete**  
Our original Golden Glove paired with the "Taper T" T-Bar is the perfect combination of proven design and performance.

MODEL	CODE	PER CASE
10" (25cm)	1814	6
14" (35cm)	1816	6
18" (45cm)	1818	6

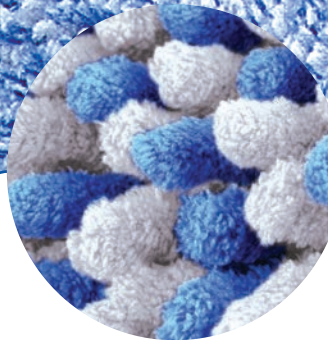


**ProGrip™ T-Bar**  
Large rubberized grip for maximum comfort.

MODEL	CODE	PER CASE
10" (25cm)	4010	6
14" (35cm)	4014	6
18" (45cm)	4018	6

# Microfiber Sleeves

*Ettore Advanced Microfiber sleeves continue our tradition of uncompromising perfection in sleeve performance.*



- Extremely fine Microfibers allow for maximum scrubbing power.
- Most models also provide extra scrub pad for added scrubbing power on stubborn material.
- Each product retains at least 20% more solution than all of the competitive models.
- Double seams on all sleeves allow for longer lasting and more durable performance.
- Durable Microfiber can withstand at least 500 washings.

"The Ettore Porcupine Sleeve is my absolute favorite. It holds the most water, scrubs great and lasts. I wouldn't use any other mop."

**Jason York**  
E-Z Window Cleaning - Waukesha, WI

Scan the QR Code to learn more about Sleeves and T-Bars!





# Buckets



**Super Bucket with Handle**  
Extra large 6 1/2 gallon capacity!  
Easily fits an 18" washer.

MODEL	CODE	PER CASE
Super Bucket w/Handle	85000	6
Super Bucket Complete (handle, lid, casters, sieve)	85500	2



## Super Bucket Accessories

MODEL	CODE	PER CASE
Handle	2967	1
Snap-On Lid	85100	1
Casters (Set of 4)	85200	1
Sieve	85301	1
Hanging Sieve	85300	1

## Super Compact Bucket

3 gallon capacity. Easily fits a 14" washer.

MODEL	CODE	PER CASE
3 Gallon	86000	6
Snap-On Lid	86100	1



**3 1/2 Gallon Bucket**   
Ideal bucket for smaller jobs.

MODEL	CODE	PER CASE
3 1/2 Gallon	82222	6

Scan the QR Code to learn more about Buckets and Holsters!



# Holsters



## SideKick™ Holster

Put your bucket on your hip! Black high impact plastic - back by poular demand. Universal - Holds all brands of squeegees! Reversible - For right or left-handers!

MODEL	CODE	PER CASE
w/ Non-Detachable Clip	02040	6
w/ Detachable Clip	02041	6
Buckle	5179	3



## Tool Belt 44"

Extra strong nylon construction. Includes handy leather loop for your Microswipe cleaning cloth.

MODEL	CODE	PER CASE
Toolbelt	2044	6



## Utility Pouch

Multi-use pouch designed to carry a variety of scrapers, blades and personal items.

MODEL	CODE	PER CASE
Pouch	50135	6



## Single Leather Squeegee Holster

Designed to hold your squeegee close by for quick deployment.

MODEL	CODE	PER CASE
Leather Holster	2042	6



## Double Loop Nylon Holster

Holds scrubber and squeegee! Built-in pouch for keys, money, extra blades, etc.

MODEL	CODE	PER CASE
Nylon Holster	50130	6



## Dual Squeegee Holster

Traditional holster design holds two squeegees. All leather construction.

MODEL	CODE	PER CASE
Dual Holster	2046	6

# Soaps and Microfiber



## Squeegee-Off™ Liquid Window Cleaning Soap 1 Gallon Ready-to-Use

Dissolves tough dirt, grime and grease with streak-free results. Biodegradable and Ammonia free.

MODEL	CODE	PER CASE
128 oz.	30200	2



## Squeegee-Off™ Liquid Window Cleaning Soap Super Concentrate

Dissolves tough dirt, grime and grease with streak-free results. Biodegradable and Ammonia free.

MODEL	CODE	PER CASE
16 oz.	30116	12
32 oz.	30130	6



## Clean Screens

Moist towelettes designed to clean window screens and tracks without screen removal. Also good for window blinds and ceiling fans. Lint free. Convenient resealable pouch.

MODEL	CODE	PER CASE
25 pack	30155	12



## Scrub Off

Water spots, mineral deposits and rust stains easily removed with a convenient semi-liquid paste.

MODEL	CODE	PER CASE
16 oz.	30161	12



## MicroSwipe 16x20

Same great quality in a 25% larger size cloth.

MODEL	CODE	PER CASE
16x20	84445	6



## MicroSwipe 14x14 (10 pack)

All-purpose microfiber cleaning cloth. Highly absorbent and lint free. 400 GSM

MODEL	CODE	PER CASE
Blue	84410	6
Red	84411	6
Yellow	84412	6
Green	84413	6



Scan the QR Code to learn more about Soaps and Microfiber!



## Uncompromising Perfection for Every Job

- 10% more Microfiber than our competitors
- Heavy-Duty Microfiber cloth with a minimum of 700 washes per cloth
- Four colors to assure non-contamination between jobs
- Multiples sizes and colors to suite your needs
- Kitchen and Bath Cloths with ribbed surface gently removes stains and restores hard finishes, like stainless steel, to new.
- Ultra-soft suede-like surface for wood, furniture, TV's and Computer screens. Won't scratch and leaves a spotless clean surface with no chemicals.



With MicroSwipe, cleaning has never been easier. Advanced microfiber technology combines friction, static electricity and capillary action to absorb and remove micro-particles, dirt, oils and moisture.



## All Purpose Microfiber Cloths

Highly absorbent and lint free

MODEL	CODE	PER CASE
(6) 13x13	84460	6



## Kitchen & Bath Microfiber Cloths

Ribbed surface gently removes stains and restores to a like-new shine.

MODEL	CODE	PER CASE
(3) 13x13	84430	6



## Wood & Furniture Microfiber Cloths

Ultra-soft suede surface for wood, furniture, TVs and computer screens.

MODEL	CODE	PER CASE
(3) 13x13	84420	6

# Scrapers & Floor Scrapers



**Pro+ Contour Scraper**  
Premium carbon steel scraper with Pro+ comfort handle in the popular 6" size.

MODEL	CODE	PER CASE
6" Complete	1044	6
6" Cover	1047	6
6" Blade Holder	1048	6

### Replacement Blades

MODEL	CODE	PER CASE
6" Blades	1045	6PK OF 10
6" Blades	1043	6PK OF 25



**Scrapemaster™ Carbon Razor Scraper**  
Double-edged blades made of high quality carbon steel!

MODEL	CODE	PER CASE
4" Complete	1995	6
Handle Only	1370	6
4" Cover	2003	6
4" Blade Holder	2001	6

### Replacement Blades

MODEL	CODE	PER CASE
4" Blades	1999	6PK OF 10



**Ettore Champion® Scraper**  
Angled head gets into the tightest corners. Stainless steel blades.

MODEL	CODE	PER CASE
5" Complete	46312	6
5" Cover	46313	6
6" Blade Holder	4856	6

### Replacement Blades

MODEL	CODE	PER CASE
5" Blades	46322	6PK OF 10



**Heavy Duty Floor Scraper with Handle™**  
Perfect for removing tape, gum, and grit from floors. Carbon steel blades.

MODEL	CODE	PER CASE
12" Handle / 4" Scraper	2005	6
48" Handle / 4" Scraper	2007	6

### Replacement Blades

MODEL	CODE	PER CASE
4" Blades	20291	6PK OF 10



**Heavy Duty Super Scraper™**  
Available in two sizes – nothing matches it for durability. Angled head to get into the tightest corners. Carbon steel blades.

MODEL	CODE	PER CASE
4" Complete	57110	6
6" Complete	1992	6
4" Cover	3106	6
6" Cover	3107	6

### Replacement Blades

MODEL	CODE	PER CASE
4" Blades	20291	6PK OF 10
6" Blades	2031	6PK OF 10



**Pocket Scraper**  
Lightweight and compact 1.5" scraper with single-edged retractable razor is perfect for removing paint, construction debris.

MODEL	CODE	PER CASE
Pocket Scraper	4287	12



**Replacement Blades**

MODEL	CODE	PER CASE
Single box of 1.5" blades	4515	100

# Professional Scrapers

*Ettore's world-famous scrapers are one of the most important tools in a window cleaner's arsenal. Use them for removing stickers, paint, tape, caulk, and industrial maintenance.*



All of our scrapers with Click-Lock work with a tapered pole



The Pro+ Contour Scraper features an extra wide blade that's available in carbon or stainless steel.

Scan the QR Code to learn more about Scrapers!



- We use the highest grade carbon steel and stainless steel in the industry to assure long lasting blades and flawless performance
- Angled scrapers to help you get into the tightest corners
- Double-edged blades to help last longer
- Pro+ Contour scraper gives you the Pro+ comfort handle in the popular 6" size
- Our scrapers will fit all of our competitors blades so you only need one tool to do the job

# Poles & Pole Accessories

## Rea-c-h 1-Section

New compact single section pole.

MODEL	CODE	PER CASE
2' (60cm)	42102	6

## Rea-c-h 2-Section

MODEL	CODE	PER CASE
4' (120cm)	42104	6
8' (240cm)	42108	6
12' (360cm)	42112	6

## Rea-c-h 3-Section

MODEL	CODE	PER CASE
9' (270cm)	1680	6
12' (360 cm)	1684	6
15' (450cm)	1688	6
18' (540cm)	1692	6
24' (720cm)	1695	2
27' (870cm)	1699	2

## Rea-c-h 4-Section

MODEL	CODE	PER CASE
18' (540cm)	44218	6
24' (720cm)	44224	2
32' (900cm)	44232	2

## InterPro 2-Section Interlock

MODEL	CODE	PER CASE
2' (60cm)	42003	6
4' (120cm)	42005	6

## Pro+™ Pole Tip

Push button for positive tool lock.

MODEL	CODE	PER CASE
Pro+ Pole Tip	1700	6

## Cone and Clamp Assemblies

Ergonomic profile makes adjustments easy

MODEL	CODE	PER CASE
Small	1908	6
Large	1910	6
Extra Large	1950	6



Ribbed tubing provides better grip and rigidity.

\*Sizes are too large for UPS/FedEx and must be shipped with an order of \$1,500 or more.

## Number 1 Replacement Section

Broken number one section? No problem.

MODEL	CODE	PER CASE
6' (185cm)	2383	1
8' (245cm)	2384	1

## Replacement Grip

Comfortable ergonomic design.

MODEL	CODE	PER CASE
2-Section	1904	6
3-Section	1906	6
4-Section	1909	6

## Pro+ Angle Adapter

Especially effective on overhead glass or anywhere you need a new angle on efficiency.

MODEL	CODE	PER CASE
Pro+ Adapter	45006	6

## Angle Adapter

Especially effective on overhead glass or anywhere you need a new angle on efficiency.

MODEL	CODE	PER CASE
Adapter	48520	12

# Poles & Custom Pole Packs



**Order only the poles you need!**  
**Created to save you money!**

## Custom Pole Packs

Choose any 10 individual REA-C-H Extension Poles (excludes 1695, 1699, 44224 and 44232) and we ship UPS/FedEx in one box!

MODEL	CODE	PER CASE
Various	42000	10

Scan the QR Code to learn more about Poles!



- Fluted and serrated on every section, our poles are 20% stronger than our competition at all extended lengths.
- Utilizing the finest materials to provide the most durable, longest lasting poles available. These poles are virtually indestructible.
- Click-Lock feature on every tool assures safe and quick "change out"
- All of our poles have been designed to the finest tolerances to friction fit all of our tools, as well as our competitors.

# Clean Up Tools

## Piranha Grabber Reach Tool

Multipurpose pick-up tool with ergonomic grip and trigger that reduces fatigue. Holds up to 5 lbs.

MODEL	CODE	PER CASE
28" (71cm)	49124	6



## Barracuda Grabber Reach Tool

Multipurpose pick-up tool with ergonomic grip and trigger that reduces fatigue. Holds up to 5 lbs.

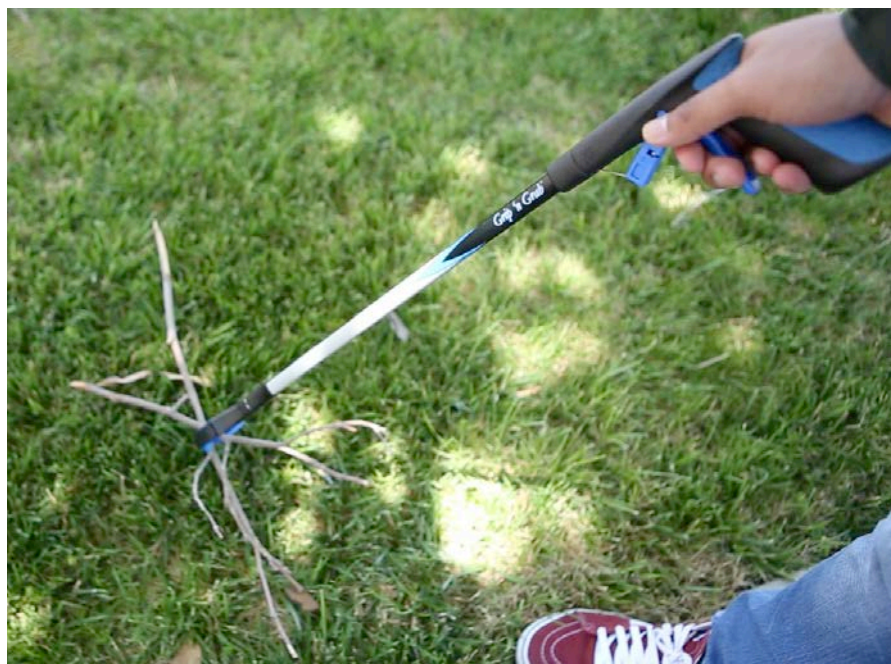
MODEL	CODE	PER CASE
34" (86cm)	49134	6



## Trach Picker

Simple but effective design. Multiple "pick-ups" before clearing tip. Safety guard included.

MODEL	CODE	PER CASE
43" (109cm)	49042	6
Replacement Tip	49542	6



## Grip'n Grab® – Extend Your Reach

The Grip'n Grab's sleek profile fits behind furniture, appliances, crawl spaces and other hard-to-reach areas. The rubberized jaws combined with pistol grip and articulating head allows for picking up small objects horizontally or vertically. Rust-proof for outdoor use, it tackles any job from fallen leaves to debris in pond or fountain.

### Grip'n Grab™

MODEL	CODE	PER CASE
16" (41cm)	49016	6
32" (81cm)	49036	6
50" (127cm)	49150	6



The articulating head turns 90° to reach tight spaces.



Scan the QR Code to learn more about the Grip'n Grab!



# Pro+ Elite Dusters



## Elite Cobweb Duster

40% fuller brush head. Contoured shape and soft, split tip bristles easily remove dust and cobwebs from corners.

MODEL	CODE	PER CASE
Cobweb Duster	8000	6



## Elite MicroSwipe Duster

Unique MicroSwipe technology removes 40% more dust and dirt than standard dusters. Great for heavy duty jobs and delicate surfaces. Cleans easily with mild soap and water.

MODEL	CODE	PER CASE
MicroSwipe Duster	8100	6



## Elite Poly Duster

Great for furniture, lighting, shutters and blinds, baseboards, mantels, and ledges. Bendable for hard to reach surfaces and cleans quickly with Electro-Static action.

MODEL	CODE	PER CASE
Poly Duster	8150	6



## Elite MicroSwipe Ceiling Fan Duster

Great for all sizes of ceiling fans. Contoured shape and soft MicroSwipe bristles remove 35% more dust and cobwebs from corners.

MODEL	CODE	PER CASE
Ceiling Fan Duster	8200	6



## Click-Lock Feature

The Elite Duster family can be used with a handle or on an Ettore REA-C-H extension pole with the Threaded Click-Lock secure lock system.

Scan the QR Code to learn more about Dusters!



## When It Comes to Dusters, Bigger is Better.

We've designed our new family of Pro+ Elite Dusters to perform better than any other line of dusters on the market. The big difference between us and the competition is size. We've designed these professional dusters to have twice the surface area of ordinary dusters which adds up to faster, more efficient cleaning.



# Dusters



## Click-Lock Feature

Most Ettore dusters can be used with a handle or on an Ettore REA-C-H extension pole with Click-Lock secure lock system.



**Ceiling Fan Brush**  
Cleans top and bottom of fan blades. Flexible brush head can be re-shaped.

MODEL	CODE	PER CASE
Threaded Click-Lock	48211	6
With Pole	45211	6



**Cobweb Brush**  
Soft bristles quickly remove dust and cobwebs from ceiling corners and base boards. Edges flattened for improved scrubability.

MODEL	CODE	PER CASE
Threaded Click-Lock	48221	12
With Pole	45221	6



**High Reach Professional Cobweb Brush**  
Contoured shape and soft bristles quickly removes dust and cobwebs from ceiling corners and base boards.

MODEL	CODE	PER CASE
118" Ext. Pole	31028	6



**Mini Blind Duster**  
Machine washable and removable sleeve. Soft microfiber bristles on 3 contoured prongs that clean mini blinds fast.

MODEL	CODE	PER CASE
Mini Blind Duster	48213	12



**MicroSwipe Ceiling Fan Duster**  
Machine washable and removable sleeve. Contoured shape and soft microfiber bristles easily remove dust and cobwebs from corners.

MODEL	CODE	PER CASE
Threaded Click-Lock	48212	6



**MicroSwipe Duster**  
Soft microfiber bristles attract dust and dirt.

MODEL	CODE	PER CASE
Threaded Click-Lock	48131	6



**Turkey Feather Duster**

MODEL	CODE	PER CASE
14" (35cm)	48618	10



**Lambswool Duster**  
Ideal for broad flat surfaces. Flexible shaft for hard-to-reach areas.

MODEL	CODE	PER CASE
Ergonomic	48612	6



**Ergonomic Ostrich Feather Duster**  
Best for delicate surfaces. Feathers pick up and hold dust.

MODEL	CODE	PER CASE
Ergonomic	48626	6



**Lightweight Lambswool Duster**  
Ideal for broad flat surfaces. Flexible shaft for hard-to-reach areas.

MODEL	CODE	PER CASE
28" Duster	48710	6
42" Duster	48720	6

# Dusters

The Retractable Ostrich Feather Duster is so compact it can fit into your pocket when closed.



**Retractable Ostrich Feather Duster**  
Best for delicate surfaces. Feathers pick up and hold dust.

MODEL	CODE	PER CASE
Retractable Duster	31034	6



**Static Duster**  
The power of static electricity attracts dust like nothing else.

MODEL	CODE	PER CASE
Threaded Click-Lock	48121	6



**Lightweight Static Duster**  
The power of static electricity attracts dust like nothing else.

MODEL	CODE	PER CASE
7" Duster	32004	6

# Brushes and Accessories



**Toilet Bowl Brush**  
Spiral bowl brush with extra brush at side for cleaning rim. Hole for hanging up.

MODEL	CODE	PER CASE
Toilet Brush	31019	12



**Cleaning Clamp**  
The multi-purpose maintenance tool with adjustable clamp re-engineered utilizing extra strong polymer plastic.

MODEL	CODE	PER CASE
Complete	48200	6
Clamp	55160	6
Brush	55170	6
Sponge	55180	6



**Super Brush™**  
Multi-purpose brush with new Pro+ comfort handle. Ideal for high-reach cleaning.

MODEL	CODE	PER CASE
Super Brush	1947	2



**Light Bulb Changer Kit**  
Kit includes standard, flood, recessed and broken bulb changers.

MODEL	CODE	PER CASE
Kit	48350	6
With Pole	48450	6



# Floor Squeegees

*Ettore offers a complete assortment of floor squeegees to help clean up virtually any situation. Our policy of build, test, and spec, applies to all of our products, including floor care tools.*

- Steel squeegees both in straight and curved configurations are galvanized to help protect in even the most caustic situations.
- Aluminum Squeegees are perfect for pushing or pulling liquid and won't corrode or rust.
- Dual moss rubber squeegees move fluid and dry it in the same motion. Great for uneven surfaces, like tile, concrete, and even decks.
- Neoprene blades for increased durability.



Scan the QR Code to learn more about Floor Squeegees!





# Floor Squeegees



## Industrial Floor Squeegees with Scraper Edge Galvanized Steel

Industrial grade straight floor squeegee with a rugged steel scraping edge and replaceable neoprene rubber blade. Use with handle #1629.

MODEL	CODE	PER CASE
24" (60cm)	54024	6
36" (90cm)	54036	6



## Industrial Floor Squeegees with Scraper Edge Galvanized Steel

Industrial grade curved floor squeegee with a rugged steel scraping edge and replaceable neoprene rubber blade. Use with handle #1629.

MODEL	CODE	PER CASE
24" (60cm)	54524	6
36" (90cm)	54536	6



## Industrial Floor Squeegees with Scraper Edge Galvanized Steel with Handle

Our most popular size complete with handle, a steel scraping edge and replaceable neoprene rubber blade. Use with handle #1629

MODEL	CODE	PER CASE
Straight 24" (60cm)	54444	6
Curved 24" (60cm)	54455	6



## Aluminum Heavy Duty Floor Squeegees

Make quick work of any surface from cement to linoleum. Straight. Replaceable rubber blade. Use with handle #1628.

MODEL	CODE	PER CASE
18" (45cm)	55018	6
24" (60cm)	55024	6
30" (75cm)	55030	6
36" (90cm)	55036	6



## Aluminum Heavy Duty Floor Squeegees

Make quick work of any surface from cement to linoleum. Curved. Replaceable rubber blade. Use with handle #1628.

MODEL	CODE	PER CASE
24" (60cm)	55039	6
30" (75cm)	55040	6
36" (90cm)	55041	6



## Aluminum Super Curved Floor Squeegees

An Ettore exclusive! Move more water with this unique semi-circular floor squeegee. Use with handle #1628.

MODEL	CODE	PER CASE
30" (75cm)	55037	2



## Wipe 'N Dry'™

### Black Moss Dual Rubber Floor Squeegees

Nothing stops this floor squeegee, not even brick or quarry tile. The 98% closed-cell dual rubber digs deep into grout and irregular surfaces. Made of galvanized steel. Use with handle #1628.

MODEL	CODE	PER CASE
18" (45cm)	1633	12
22" (55cm)	1636	10



## Wipe 'N Dry'™

### Black Moss Rubber Floor Squeegees

Nothing stops this floor squeegee, not even brick or quarry tile. The 98% closed-cell dual rubber digs deep into grout and irregular surfaces. Made of galvanized steel. Use with handle #1628.

MODEL	CODE	PER CASE
30" (75cm) w/ Splash Guard	1639	10

# Wipe 'N Dry

*The Ultimate Tool for Moving Liquid from Uneven Surfaces.*



- Dual moss rubber squeegees move fluid and dry it in the same motion. Great for uneven surfaces like tile, concrete, and decks.
- Neoprene blades for increased durability.
- Rugged bristles loosen impediments.

# Floor Squeegees

## Wipe 'N Dry™ Black Moss Rubber with Brush Floor Squeegees

Moss rubber and polypropylene bristles allow dual brush and squeegee action. Perfect for food service applications. Lightweight. Includes metal handle.

MODEL	CODE	PER CASE
18"	48240	6



## Wipe 'N Dry™ Black Moss Rubber Floor Squeegees with Splash Guards and Brush

The 98% closed-cell moss rubber digs deep into grout and irregular surfaces. The Polypropylene bristles allow dual brush and squeegee action. Great for food service jobs.

MODEL	CODE	PER CASE
18" w/ guard	48218	10
22" w/ guard	48222	10
18" guard/brush	48318	10
22" guard/brush	48322	10



## Utility Handles with Threaded Tip

Ideal for floor and window squeegees.

MODEL	CODE	PER CASE
60" Handle	42100	6



## Utility Handles with Tapered Tip

Ideal for floor and window squeegees.

MODEL	CODE	PER CASE
60" Handle	42105	6



## Wooden Floor Squeegee Handles

MODEL	CODE	PER CASE
54" (135cm) .90" dia.	1628	6
60" (150 cm) 1.125" dia.	1629	6



## Lightweight Metal Handles with Tapered Tip

MODEL	CODE	PER CASE
60" (150cm)	61060	12



## Replacement Neoprene Rubber for Industrial Steel Floor Squeegees

Long lasting replacement rubber.

MODEL	CODE	PER CASE
24" (60cm)	54424	6
36" (90cm)	54436	6



## Black Replacement Rubber for Straight and Curved End Aluminum Floor Squeegees

Long lasting replacement rubber.

MODEL	CODE	PER CASE
18" (45cm)	56018	6
24" (60cm)	56024	6
30" (75cm)	56030	6
36" (90cm)	56036	6



Scan the QR Code to learn more about Auto Cleaning!



# Auto Cleaning



## Auto Squeegee Rubber

The traditional auto squeegee with dense sponge head wrapped in durable nylon mesh for removing road grime. Scrub, flip and squeegee. Polypropylene head, metal handle.

MODEL	CODE	PER CASE
8" (20cm) 21" overall length	59016	12
10" (25cm) 22.5" overall length	59024	12



## Telescopic Auto Squeegee

Perfect for RVs and truck windows. 4' to 7' extension pole.

MODEL	CODE	PER CASE
10" (25cm)	59084	6



## Auto Squeegee Scrubber Wood Handle

The original automotive squeegee with bright red handle. Metal head.

MODEL	CODE	PER CASE
8" (20cm) 17" overall length	59816	12
8" (20cm) 25" overall length	59020	12
10" Repl. Head	59010	12



## Extend-A-Flo® Wash Brush

Soft bristles with a contoured, comfortable foam grips. Easy twist lock for wet hands and Insta-action shut off valve. Extends to 6'.

MODEL	CODE	PER CASE
Extend-A-Flo	59072	4

MODEL	CODE	PER CASE
Flo Brush	59070	6
Large Flo Brush	59080	6
Wrap Around Flo Brush	59090	6
Flo Scrub Brush	59100	6



## Acrylic Squeegee

Perfect for car, boat & RVs.

MODEL	CODE	PER CASE
Acrylic	17006	12



## MicroSwipe Sponge

Dual action microfiber wash sponge.

MODEL	CODE	PER CASE
Sponge	59005	12



## MicroSwipe

10 pack. All-purpose microfiber cleaning cloths. Highly absorbent and lint free. 400 GSM

MODEL	CODE	PER CASE
Blue 14x14	84410	6
Red 14x14	84411	6
Yellow 14x14	84412	6
Green 14x14	84413	6
6pk 13x13	84460	6



## MicroSwipe Wash Mitt

Microfiber cleaning mitt for car, boat & RVs.

MODEL	CODE	PER CASE
Mitt	59000	12

# Kits

## A Variety of Kits To Meet Your Needs

### A. Ettore Welcome Kit

- Contains:
- Pro+ Handle
  - ProGrip Handle
  - 12", 18" brass channels
  - 10", 18" Golden Glove washers, complete
  - Sidekick with belt

MODEL	CODE	PER CASE
Kit	2508	1



### B. Window Cleaning Kit

- Contains:
- 10" stainless steel Backflip™
  - Scrapemaster scraper
  - Bucket
  - Soap
  - Sponge

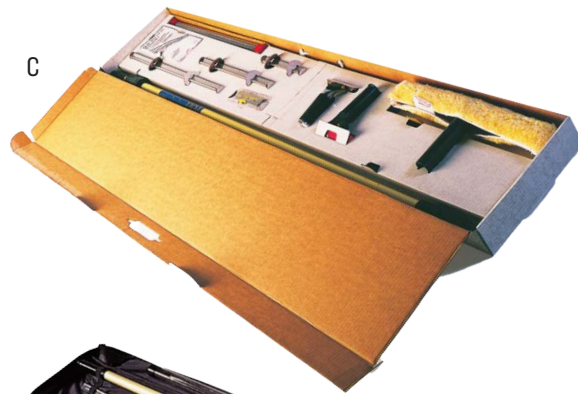
MODEL	CODE	PER CASE
Kit	85555	1



### C. Starter Window Cleaning Kit

- Contains:
- 8' REA-C-H pole
  - Stainless steel channels 8", 12", and 18"
  - Rubbers (3 each) 8", 12", and 18"
  - Scrapemaster scraper w/replacement blades (10 ea.)
  - 14" Golden Glove washer, complete
  - Stainless Quick Release handle

MODEL	CODE	PER CASE
Kit	2506	1



### D. Window Cleaning Kit with Case

- Contains:
- Nylon case w/shoulder strap
  - 8' REA-C-H pole
  - Scrapemaster scraper w/replacement blades (10 ea.)
  - Stainless steel channels 10", 12", 14" and 18"
  - Stainless Quick Release handle
  - Super System handle
  - Rubbers (3 each) 10", 12", 14" and 18"
  - 14" Golden Glove washer

MODEL	CODE	PER CASE
Kit	04910	1
Case Only	04967	3



### E. Universal Window Cleaning Kit

- Contains:
- Aluminum handle with foam grip
  - Aluminum channels 8", 12", 18"
  - 14" sleeve with Tapered T-Bar
  - Pro+ scraper/Cleaning Clamp Complete
  - 36" replacement rubber
  - 3-Section Interlock 8' Pole
  - Pack of 10 stainless blades

MODEL	CODE	PER CASE
Kit	2510	1

### F. REA-C-H Window Cleaning & Dusting Kit

- Contains:
- 12" household squeegee
  - 10" window washer
  - 5' extension handle
  - Poly-static duster
  - Cobweb brush

MODEL	CODE	PER CASE
Kit	2004	1

### G. Total Glass Care Kit

- Contains:
- Squeegee/Scrubber combination tool with 16" handle
  - Squeegee Off concentrate soap
  - Shower Sweep bath squeegee
  - MicroSwipe microfiber towel

MODEL	CODE	PER CASE
Kit	2006	1

### H. All-Purpose Window Cleaning Kit

- Contains:
- 12" All Purpose squeegee
  - 10" T-Bar with sleeve
  - 5' Extension poles
  - Click-Lock tip

MODEL	CODE	PER CASE
Kit	17050	12

Scan the QR Code to learn more about Kits!



# Kits

# Point-of-Purchase Displays



**New Color!**

## Window Cleaning Display — #47002

Self-service merchandising system packed with our best selling professional cleaning products.

### Increase Sales!

- Generate impulse sales with a full assortment of the best selling Ettore window cleaning tools
- Easy to read product locator sheet provides information to help your customer quickly find the right tool for the job.
- Strong Ettore branding

### Improve Product Presentation

- Fully assembled tools allow for quick and easy product selection
- Individually labeled compartments identify refills and replacement items for easy customer selection
- Built in rack displays poles neatly
- Quick and easy set up

### Point of Purchase Displays

PROD. CODE

47002

Dimensions 92" H x 40" W x 22" D

\* (Display stand included at no charge.)

\* With qualifying order

# Point-of-Purchase Displays

## 47002 Window Cleaning Display

Free display stand included with qualifying order.

MODEL	CODE	QTY.
8" All Purpose Squeegee	17008	3
12" All Purpose Squeegee	17012	3
12" Master Brass Squeegee, Complete	1013	3
14" Master Brass Squeegee, Complete	1017	3
18" Master Brass Squeegee, Complete	1025	3
12" Pro+ Squeegee, Complete	2012	3
14" Pro+ Squeegee, Complete	2014	3
18" Pro+ Squeegee, Complete	2018	3
14" Golden Glove Washer, Complete	1816	3
18" Golden Glove Washer, Complete	1818	3
14" ProGrip Washer, Complete	4014 & 40014	3
18" ProGrip Washer, Complete	4018 & 40018	3
14" Advanced MicroFiber Sleeve	40014	3
18" Advanced MicroFiber Sleeve	40018	3
14" Brass BackFlip	71140	3
Pocket Scraper	4287	3
4" Heavy Duty Super Scraper, Complete	57110	3
6" Pro+ Contour Scraper, Complete	1044	3
1.5" Pocket Scraper Replacement Blades	4515	100
12" Replacement Master Rubber	1412	12
14" Replacement Master Rubber	1417	12
18" Replacement Master Rubber	1427	12
12" Master Stainless Channels with Rubber	1169	12

MODEL	CODE	QTY.
14" Master Stainless Channels with Rubber	1173	12
18" Master Stainless Channels with Rubber	1181	12
12" Master Brass Channels with Rubber	1131	12
14" Master Brass Channels with Rubber	1135	12
18" Master Brass Channels with Rubber	1144	12
14" Pro + Super System T-Bar	1614	3
18" Pro+ Super System T-Bar	1618	3
Pro+ Super System Handle	1640	6
Master Brass Squeegee Handle	1324	6
14" Golden Glove Sleeve	51014	3
18" Golden Glove Sleeve	51018	3
6" Pro+ Contour Replacement Blades	1045	30
4" Heavy Duty Replacement Blades	20291	30
Super Bucket with Handle	85000	1
32 oz. Squeegee-Off Liquid Soap	30130	4
4' Rea-c-h 2-sec Extension Pole	42104	2
8' Rea-c-h 2-sec Extension Pole	42108	2
12' Rea-c-h 2-sec Extension Pole	42112	2
18' Rea-c-h 3-sec Extension Pole	1692	2

## 47004 Window Cleaning Display Refill Kit

MODEL	CODE	QTY.
8" All Purpose Squeegee, Complete	17008	3
12" All Purpose Squeegee, Complete	17012	3
18" Master Brass Squeegee, Complete	1025	3
18" Pro+ Squeegee, Complete	2018	3
18" Golden Glove Washer, Complete	1818	3
18" Pro+ T-Bar	4318	3
18" Advanced MicroFiber Sleeve	40018	6
14" Brass BackFlip	71140	3
Pocket Scraper	4287	3
6" Pro+ Contour Scraper, Complete	1044	3
18" Replacement Master Rubber	1427	12
18" Master Stainless Channels with Rubber	1181	12
18" Master Brass Channels with Rubber	1144	12

MODEL	CODE	QTY.
18" Pro+ Super System T-Bar	1618	3
Pro+ Super System Squeegee Handle	1640	3
Master Brass Squeegee Handle	1324	3
18" Golden Glove Sleeve	51018	3
6" Pro+ Contour Replacement Blades	1045	30
1.5" Pocket Scraper Replacement Blades	4515	100
Super Bucket with Handle	85000	1
32 oz. Squeegee-Off Liquid Soap	30130	3
8' Rea-c-h 2-sec Extension Pole	42108	3
12' Rea-c-h 2-sec Extension Pole	42112	2
18' Rea-c-h 3-sec Extension Pole	1692	2

# Point-of-Purchase Displays



**New Color!**

## Complete Cleaning Display — #47003

Self-service merchandising system packed with our best selling professional cleaning products.

### Increase Sales!

- Generate impulse sales with a full assortment of the best selling Ettore cleaning tools
- Easy to read product locator sheet provides information to help your customer quickly find the right tool for the job.
- Strong Ettore branding

### Improve Product Presentation

- Fully assembled tools allow for quick and easy product selection
- Individually labeled compartments identify refills and replacement items for easy customer selection
- Built in rack displays poles neatly
- Quick and easy set up

### Point of Purchase Displays

PROD. CODE
47003

Dimensions 92" H x 40" W x 22" D

\* (Display stand included at no charge.)

\* With qualifying order

# Point-of-Purchase Displays

## 47003 Complete Cleaning Display

MODEL	CODE	QTY.
12" Master Brass Squeegee, Complete	1013	6
18" Master Brass Squeegee, Complete	1025	6
Ceiling Fan Brush	48211	2
Cobweb Brush	48221	2
14" Stainless Back Flip	71141	3
14" Golden Glove Washer, Complete	1816	3
18" Golden Glove Washer, Complete	1818	3
14" Pro-Grip Washer, Complete	4014 & 40014	3
4" Heavy Duty Super Scraper	57110	3
22" Wipe 'N Dry Black Moss Floor Squeegee	1636	4
48" Heavy Duty Floor Scraper	2007	6
32" Grip'n Grab	49036	3
4" Heavy Duty Floor Scraper Replacement Blades	20291	30
Brass Squeegee Handle	1324	6
12" Master Stainless Channels with Rubber	1169	12
18" Master Stainless Channels with Rubber	1181	12

MODEL	CODE	QTY.
Quick Release Stainless handle	1343	6
Pro-Grip Handle	2610	6
12" Replacement Master Rubber	1412	12
14" Replacement Master Rubber	1417	12
18" Replacement Master Rubber	1427	12
14" Golden Glove Sleeve	51014	3
18" Golden Glove Sleeve	51018	3
12" Master Brass Channels with Rubber	1131	12
18" Master Brass Channels with Rubber	1144	12
8' Rea-c-h 2-sec Extension Pole	42108	3
18' Rea-c-h 3-sec Extension Pole	1692	3
18" Wipe'N Dry Black Moss Rubber Floor Sq. w/Brush	48240	3
60" Lightweight Metal 1-sec Pole	61060	3
54" Wooden Floor Squeegee Handle	1628	3

## 47005 Complete Cleaning Display Refill Kit

MODEL	CODE	QTY.
12" Master Brass Squeegee, Complete	1013	3
12" Master Brass Channels with Rubber	1131	12
Master Brass Squeegee Handle	1324	6
12" Master Stainless Channels with Rubber	1169	12
Quick Release Handle, SS with Rubber Grip	1343	6
Pro+ Squeegee Handle	2020	6
14" Stainless Steel Back Flip	71141	3
12" Replacement Master Rubber	1412	12
14" Replacement Master Rubber	1417	12
14" Golden Glove Washer, Complete	1816	3
14" Golden Glove Sleeve	51014	3
14" Pro+ T-Bar	4314	3
8' Rea-c-h 2-sec Extension Pole	42108	3

MODEL	CODE	QTY.
18' Rea-c-h 3-sec Extension Pole	1692	3
Ceiling Fan Brush	48211	2
32" Grip 'N Grab	49036	3
4" Heavy Duty Super Scraper, Complete	57110	2
4" Heavy Duty Floor Scraper Replacement Blades	20291	30
18" Wipe'N Dry Black Moss Rubber Floor Sq. w/Brush	48240	2
22" Wipe'N Dry Black Moss Rubber Floor Squeegee	1636	2
Metal Utility Handles with Threaded Tip	42100	2
Metal Utility Handles with Tapered Tip	42105	2
48" Heavy Duty Floor Scraper	2007	2
Cobweb Brush	48221	2
32 oz. Squeegee-Off Liquid Soap	30130	1

# Aquaclean EZ1 Pro+

## Introducing Our Most Portable and Sustainable Pure Water System

- Super portable and lightweight
- Reusable and sustainable resin filter
- Easy and time-saving resin replacement
- Work two poles on a single unit
- High pressure with superior water purity
- 3.3 gallon de-mineralization capacity
- Stainless steel pressure housing

A water-shed moment in the history of pure water technology! The EZ1 Pro+ is more than just our



latest pure water system—with a single regenerated resin filter, it's almost half the weight of other systems. Regenerated resin requires only a single purchase and then you can regenerate over and over again.

It's a clear cost advantage over multi-stage systems and it's eco-friendly too. Reduce your operating costs and Greenify your business with The EZ1 Pro+.



Run two poles at once with our patented water flow design that eliminates the need for pumps.

### Model # 84200

#### Single Stage Water Treatment System

Includes:

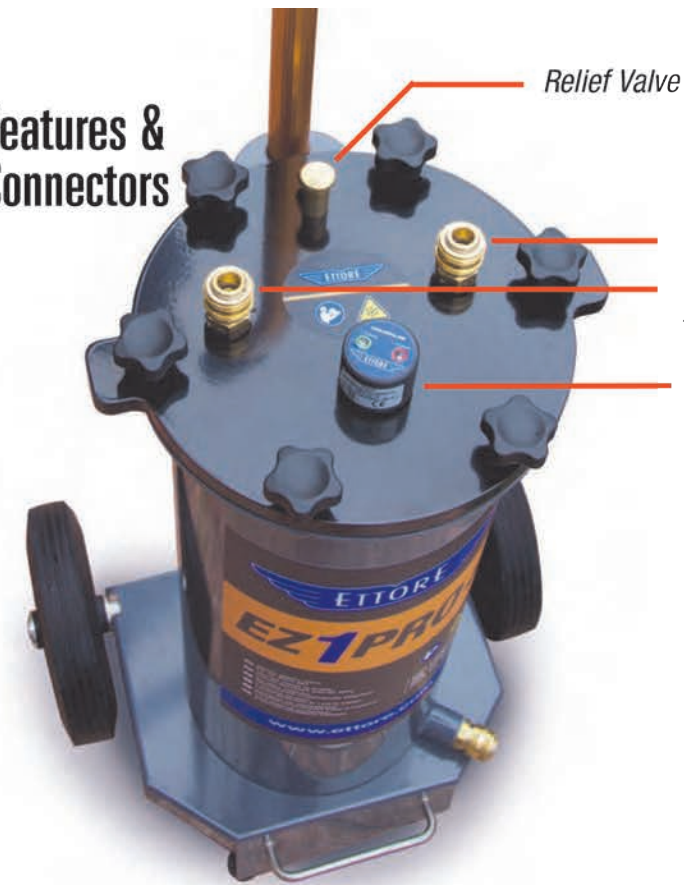
- Single-stage Fastbag reusable filtration system
- Lightweight and durable cart system
- Quality control by integrated conductivity measurement
- Quick disconnect hoses
- Stainless steel pressure housing and aluminum lid
- Pressure relief valve



Scan the QR Code to learn more about the EZ1 Pro+



### Features & Connectors



Relief Valve

Two hose connectors made from high quality brass fittings allow you to run two poles at once.

Continuous water quality monitor

# Aquaclean EZ1 Pro+

**E**ttore was in the forefront of the pure water revolution of the 1990's with our groundbreaking Aquaclean systems and accessories. All of our knowledge, observations, and expertise have culminated in our new EZ1 Pro+™. This system gives you every option. There is no need to look further, and it is backed by legendary Ettore Customer Service.

## The Advantages Are Clear.

- 75% Faster Than Conventional Cleaning Methods.
- Safely Clean From the Ground—No Ladders Needed.
- Environmentally Friendly—No Soaps or Chemicals.
- Surface Dries Spot Free in Any Weather Condition, Even Direct Sunlight.
- Greater Access to Hard to Reach Areas.
- Increased Productivity—No Set-Up Time For Ladders or Lifts.
- Lasts 10 Times Longer Than Standard DI Tanks.
- Low Learning Curve—Reduce Training Time.

## The Fastbag™: The Heart of the System

The Ettore EZ1 Pro+ is equipped with the Ettore Fastbag™ system. This innovative system allows for quick and easy replacement of the 3.3 gallon mixedbed resin. The Fastbag™ can be filled with either regenerated mixedbed resin, or 1-way disposable resin (Item #84204).

Using regenerated mixedbed resin will substantially lower the cost of operation and is a “green” solution as the mixedbed resin can be re-generated over and over again.



Ion exchange granulates in Fastbag system or you can use loose resin. There is also an optional chemical injector for pre-cleaning 3rd party operators.



# Aquaclean Poles

## Aquaclean Poles

The Aquaclean Carbon Fiber Pole system is designed to deliver the precise balance between rigidity and weight, without sacrificing durability or strength. Each pole has an aluminum outer tube that provides added strength while protecting the expensive carbon fiber inner pole. This is simply the best water fed pole available.

PART #	DESCRIPTION	COLLAPSED LENGTH	WEIGHT
7218	18 ft. Aluminum/Carbon Fiber	54"	2.43 lbs.
7225	25 ft. Aluminum/Carbon Fiber	67.5"	3.69 lbs.
7235	35 ft. Aluminum/Carbon Fiber	72"	6.42 lbs.
7245	45 ft. Aluminum/Carbon Fiber/Hi Modulus	79"	7.86 lbs.
7255	55 ft. Aluminum/Carbon Fiber/Hi Modulus	91"	8.97 lbs.
7265	65 ft. Aluminum/Carbon Fiber/Hi Modulus	105"	10.07 lbs.

- All poles are shipped with a 14" brush, angle adapter and extended length of the hose plus 25'
- Additional size brushes sold separately.
- Actual cleaning height may vary.

Please consider grade of surface, height of windows, distance from building the operator is standing and height of operator. As with all poles, extreme care must be taken while working with water near electricity.



*Locks are not glued so they can be easily replaced*

## Unlock the power of the new gold standard in water-fed poles.

The all new Aquaclean Carbon Fiber Pole is the most powerful water-fed pole you can buy. The revolutionary Carbon Fiber design provides greater rigidity at longer lengths than any other pole on the market, allowing for effortless brush control. Each pole has an aluminum outer tube that adds strength when extended and protects the carbon fiber inner poles when fully retracted. It's easy to transport, even in small vehicles.



*New clamp design has positive locking tabs that won't release unintentionally*

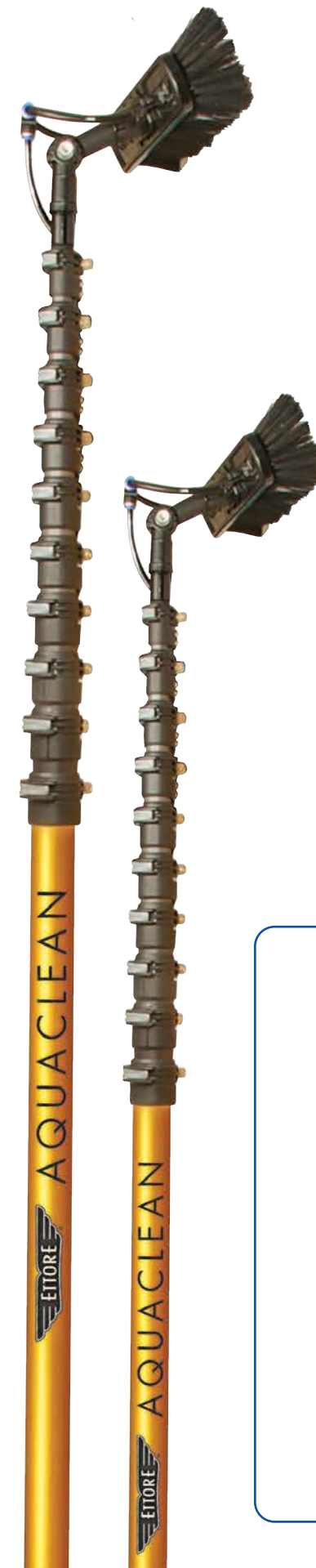


*Each clamp has a tapered bottom to prevent snags and keeps the clamps separated to prevent pinch points*



*Durable endcap protects the end of the pole and features a side hose aperture that prevents kinks.*

The new Multifunction Clamping System positively locks each section, preventing unintended pole collapse. The ergonomic design of the locking tabs minimizes fatigue and are engineered for long lasting performance. Each clamp has a tapered bottom that eliminates pinch points and prevents the pole from getting caught on window sills and branches. And replacement pole sections easily bolt on—no more gluing sections together.



*Choose one of our six pole length options, starting from 18 feet.*

Scan the QR Code to learn more about Aquaclean Poles



# Rea-c-h™ Pole Conversion Kit

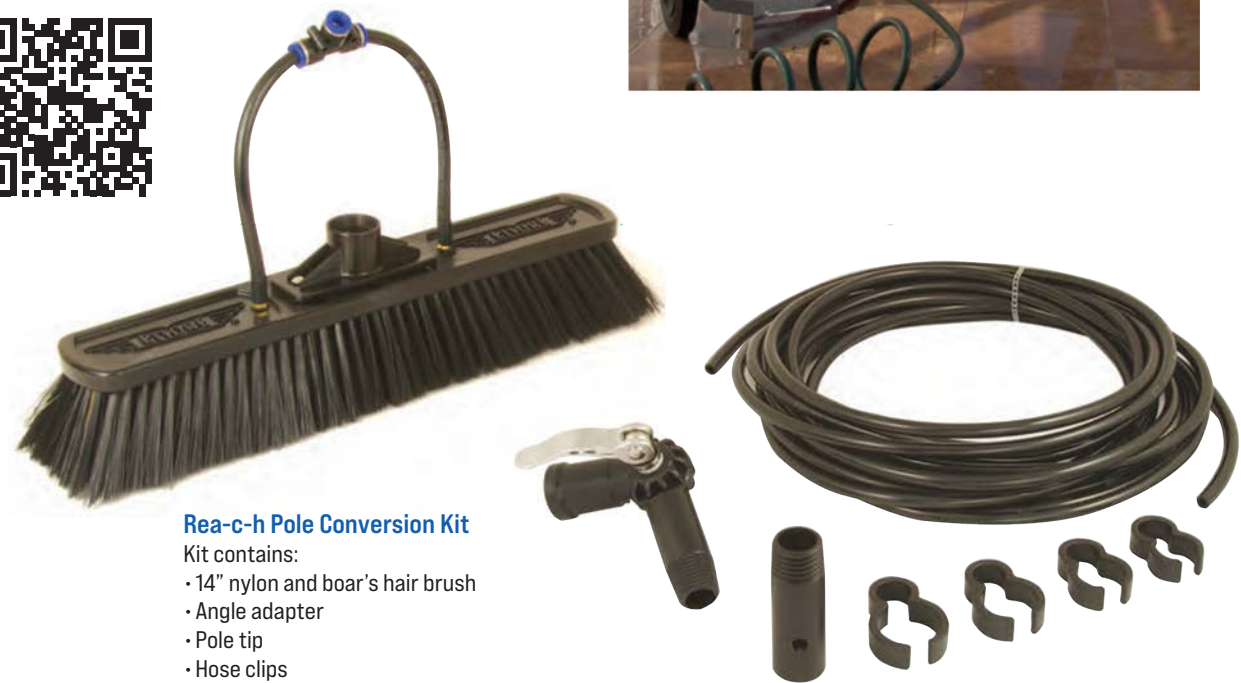
## Now You Can Convert Our Rea-c-h Pole Into a Water-fed Pole.

Let's face it, Carbon fiber poles are expensive and you don't always need large poles that extend to the fourth and fifth floors.

We have created a kit that combines our revolutionary Aquaclean brush, pole and angle adapters and quick connect hose that allows you to utilize every Ettore Rea-c-h pole in your arsenal and adapt it to pure water cleaning.

Now we offer a solution for pole lengths from two feet to 65 feet, all using the same performance proven Ettore Technology!

Scan the QR Code to learn more about Aquaclean Products



### Rea-c-h Pole Conversion Kit

Kit contains:

- 14" nylon and boar's hair brush
- Angle adapter
- Pole tip
- Hose clips
- 30 ft. hose

MODEL	CODE	PER CASE
Kit	9085	1

# Aquaclean Brushes



Both Aquaclean brushes combine nylon and boar's hair bristles that leave glass perfectly clean.



All water jets are made from high quality brass fittings



### 14" Nylon & Boar's Hair Brush

PART #	DESCRIPTION
9014	Single Pair of Jets
Angle adapter not included.	



### 18" Nylon & Boar's Hair Brush

PART #	DESCRIPTION
9018	Double Pair of Jets
Angle adapter not included.	



# Aquaclean Replacement Parts and Accessories

# Index



## Replacement Tubing

PART #	DESCRIPTION
9010	8mm Hose



## Replacement End Cap

PART #	DESCRIPTION
9025	37mm cap
9026	43mm cap
9027	49mm cap
9028	Overmolded Cover



## Clips for Rea-c-h Pole Conversion Kit

PART #	DESCRIPTION
9023	Clips for Pole Kit (4 count)



## Brass Quick Coupling

PART #	DESCRIPTION
9038	Brass Quick Coupling



## Quick Connector, Brass

PART #	DESCRIPTION
9029	Brass Quick Connector



## Replacement Clamps

PART #	DESCRIPTION
9050	Sec. N1 Clamp Assembly
9051	Sec. #1 Clamp Assembly
9052	Sec. #2 Clamp Assembly
9053	Sec. #3 Clamp Assembly
9054	Sec. #4 Clamp Assembly
9055	Sec. #5 Clamp Assembly
9056	Sec. #6 Clamp Assembly
9057	Sec. #7 Clamp Assembly
9058	Sec. #8 Clamp Assembly
9059	Sec. #9 Clamp Assembly



## Rea-c-h Euro Thread Adapter

PART #	DESCRIPTION
1703	Euro Adapter (1 count)



## Angle Adapter

PART #	DESCRIPTION
9024	Angle Adapter



## Hose Connect for 2nd Pole

PART #	DESCRIPTION
84206	Hose Connect for 2nd Pole

## Aluminum Replacement Pole Section

PART #	DESCRIPTION
9118	18 ft. Basetube
9125	25 ft. Basetube
9135	35 ft. Basetube
9145	45 ft. Basetube
9155	55 ft. Basetube
9165	65 ft. Basetube



## Carbonfiber Replacement Pole Sections

Replacement pole sections are available in several sizes. Please contact Customer Service for more information.



## Replacement Pole Tip

PART #	DESCRIPTION
9019	Pole tip with Euro Threads



## Replacement Fastbag for EZ1Pro+

PART #	DESCRIPTION
84203	Replacement Fastbag
84204	Resin Filled Fastbag (19 lbs.)

## A

- Acrylic Squeegee ..... 33
- Advanced Microfiber Sleeve ..... 12, 13, 37
- All-Purpose Squeegee, Complete ..... 10, 37
- All-Purpose Window Cleaning Kit ..... 35
- All-Purpose Microfiber Cloths ..... 16, 17, 33, 35
- Aluminum Channels ..... 4, 35
- Aluminum Handle ..... 6
- Aluminum Heavy Duty Floor Squeegee ..... 30
- Aluminum Squeegee, Complete ..... 10
- Aluminum Super Curved Floor Squeegees ..... 30
- Angle Adapter ..... 20
- Aquaclean ..... 40-46
- Aquaclean Accessories ..... 44-46
- Aquaclean Poles ..... 42, 43
- Auto Squeegees ..... 33
- Auto Squeegees Scrubber Wood Handle ..... 33

## B

- BackFlip ..... 10, 11, 34, 37, 39
- BackFlip Handle ..... 10
- Barracuda Grabber Reach Tool ..... 22
- Brass Channels ..... 4, 37, 39
- Brass End Clips ..... 2
- Brass Squeegee, Complete ..... 10, 37, 39
- Brass Squeegee Handles ..... 6, 7, 37, 39
- Buckets ..... 14, 34, 37

## C

- Ceiling Fan Brush ..... 26, 39
- Channels ..... 4, 5, 37, 39
- Clean Screens ..... 16
- Clean Up Tools ..... 22, 23
- Cleaning Clamp ..... 28
- Clipless Kit ..... 8
- Cobweb Brush ..... 24-26, 35, 39
- Cone and Clamp Assemblies ..... 20
- Complete Squeegees ..... 10, 34-39
- Contour Pro+ Handle ..... 8, 9
- Custom Pole Packs ..... 21

## D

- Double Loop Nylon Holster ..... 15
- Dual Squeegee Holster ..... 15
- Dura 2 Sleeve ..... 12
- Dusters ..... 24-27, 35, 39

## E

- Elite Dusters ..... 24, 25
- Ettore Champion Scraper ..... 18
- Ettore Welcome Kit ..... 34
- Extend-A-Flo Wash Brush ..... 33

## F

- Floor Scrapers ..... 18
- Floor Squeegees ..... 29-32

## G

- Golden Glove Sleeve ..... 12, 34, 37, 39
- Golden Glove Washer Complete ..... 12, 34, 37, 39
- Grabbers ..... 22, 23, 39

## H

- Handle Kits ..... 8
- Heavy Duty Floor Scraper with Handle ..... 18, 37, 39
- Heavy Duty Floor Scraper ..... 18, 37, 39
- Holsters ..... 15

## I

- Industrial Floor Squeegee with Scraper ..... 30
- InterPro Interlocking Extension Pole ..... 20

## K

- Kitchen and Bath Microfiber Cloths ..... 17
- Kits ..... 34, 35

## L

- Lambswool Duster ..... 27
- Ledge-eze Handle ..... 6
- Light Bulb Changer Kit ..... 28
- Lightweight Metal Pole, 1 Sec. 60" ..... 32, 39

## M

- Master Rubber ..... 2, 37, 39
- Microfiber Cloths ..... 16, 17, 33, 35
- Microfiber Sleeve ..... 12, 13, 37, 39
- MicroSwipe ..... 16, 17, 24, 26, 33, 35
- MicroSwipe Ceiling Fan Duster ..... 24, 26
- MicroSwipe Wash Mitt ..... 33
- MicroSwipe Sponge ..... 33
- Mini Blind Duster ..... 26
- Mighty Washer Sleeve ..... 12

# Index

## N

Neoprene ..... 30, 32

## O

## P

Piranha Grabber Reach Tool ..... 22  
 Point of Purchase Displays ..... 36-39  
 Pocket Scraper ..... 18, 37  
 Pole Accessories ..... 20  
 Pole Number 1 Replacement ..... 20  
 Poles ..... 20, 21  
 Porcupine Sleeve ..... 12  
 Pro+ Contour Scraper ..... 18, 19, 37  
 Pro+ Handle ..... 8  
 Pro+ T-Bar ..... 12, 37, 39  
 Pro+ Pole Tip ..... 20  
 Pro+ Elite Dusters ..... 24, 25  
 Pro+ Squeegee, Complete ..... 10, 37  
 Pro+ Super System T-Bar ..... 12, 37  
 ProGrip Handle ..... 8, 39  
 ProGrip T-Bar ..... 12, 39

## Q

Quick Release Aluminum Handle ..... 6  
 Quick Release Brass Handle ..... 6  
 Quick Release Handle Kit ..... 8  
 Quick Release Stainless Steel Handle ..... 6, 39  
 Quick Release Super Channel Handle ..... 8

## R

Rea-c-h Extension Poles ..... 20, 21  
 Rea-c-h Extension Poles, 2 section ..... 20, 21, 37, 39  
 Rea-c-h Extension Poles, 3 section ..... 20, 21, 37, 39  
 Rea-c-h Extension Poles, 4 section ..... 20  
 Rea-c-h Window Cleaning and Dusting Kit ..... 35  
 Rea-c-h Pole Conversion Kit ..... 44  
 Replacement Grips, Poles ..... 20  
 Replacement Rubber, Floor Squeegee ..... 32  
 Resin Filled Fastbag ..... 46

## S

Scrapemaster Razor Scraper ..... 18, 34  
 Scraper Replacement Blades ..... 18, 37, 39  
 Scrapers ..... 18, 19, 34, 35, 37, 39  
 Scrub Off ..... 16  
 Sidekick Holster ..... 15

Single Leather Squeegee Holster ..... 15  
 Shower Sweep ..... 10  
 Sleeves ..... 12, 37, 39  
 Soaps ..... 16, 34, 35, 37, 39  
 Squeegee Handles ..... 6-9  
 Squeegee-Off Window Cleaning Soap ..... 16, 34, 35, 37, 39  
 Stainless Steel BackFlip ..... 10, 11, 34, 37, 39  
 Stainless Steel Channels ..... 4, 37, 39  
 Stainless Steel Floor Squeegee ..... 30  
 Stainless Steel Squeegee Handle ..... 6  
 Starter Window Cleaning Kit ..... 34  
 Static Duster ..... 27  
 Super Brush ..... 28  
 Super Bucket ..... 14, 37  
 Super Compact Bucket ..... 14  
 Super Channel ..... 5  
 Super Channel Kit ..... 8  
 Super Channel Handle ..... 8  
 Super System Handle ..... 8, 37

## T

Taper T-Bar ..... 12  
 T-Bars ..... 12  
 T-Shaped Rubber ..... 2  
 Toilet Bowl Brush ..... 28  
 Telescopic Auto Squeegee ..... 33  
 Tool Belt 44" ..... 15  
 Total Glass Care Kit ..... 35  
 Trash Picker ..... 22  
 Turkey Feather Duster ..... 27

## U

Universal Window Cleaning Kit ..... 35  
 Utility Handles ..... 32, 39  
 Utility Pouch ..... 15

## W

Window Cleaning Kit ..... 34  
 Wipe'n Dry Black Moss Rubber Floor Squeegees ..... 31, 32, 39  
 Wood and Furniture Microfiber Cloths ..... 17  
 Wooden Floor Squeegee Handle ..... 32

## Z

Zero Degree Handle ..... 8, 9

# Part Number Index

Part #	Page #	Part #	Page #	Part #	Page #	Part #	Page #
02040	15	1433	2	2031	18	4856	18
02041	15	1438	2	2042	15	48612	27
04910	34	1439	2	2044	15	48618	27
04967	34	1443	2	2046	15	48626	27
1011	8	1444	2	2383	20	48710	27
1012	8	1497	2	2384	20	48720	27
1013	10,37,39	1503	2	2506	34	49016	23
1017	10,37	1509	2	2508	34	49036	23,39
1021	10	15101	10	2510	35	49042	22
1025	10,37,39	15102	10	2610	8,39	49124	22
1043	18	1512	2	2967	14	49134	22
1044	18,37	1518	2	3003	6	49150	23
1045	18,37	1521	2	30116	16	49542	22
1047	18	1610	12	30130	16,37,39	4988	22
1048	18	1614	12,37	30155	16	49880	2
11010	5	1618	12,37	30161	16	4989	2
11020	5	1622	12	30200	16	49890	2
11030	5	1628	32,39	31019	28	50130	15
11040	5	1629	32	31028	26	50135	15
11050	5	1633	30	31030	37	51010	12
1119	4	1636	30,39	31034	27	51014	12,37,39
1123	4	1639	30	3106	18	51018	12,37,39
1127	4	1640	8,37	3107	18	51022	12
1128	4	1645	8	32004	27	5179	15
1131	4	1680	20	3212	10	52010	12
1131	37,39	1684	20	3214	10	52014	12
1132	4	1688	20	3216	10	52018	12
1135	4,37	1692	20,37,39	3218	10	52340	8
1136	4	1695	20	40010	12	5362	10
1140	4	1699	20	40014	12,37,39	5363	10
1141	4	1700	20	40018	12,37	54024	30
1144	4,37,39	17006	33	40022	12	54036	30
1145	4	17008	10,37	4010	12	54424	32
1148	4	17010	10	4014	12,37,39	54436	32
1152	4	17012	10,37	4018	12,37	54444	30
1153	4	17014	10	42000	21	54455	30
1161	4	17016	10	42003	20	54524	30
1165	4	17018	10	42005	20	54536	30
1169	4,37,39	1703	46	42100	32,39	55018	30
1173	4,37	17050	35	42102	20	55024	30
1177	4	17066	10	42104	20,37	55030	30
1181	4,37,39	1814	12	42105	32,39	55036	30
1184	4	1816	12,37,39	42108	20,37,39	55037	30
1188	4	1818	12,37,39	42112	20,37	55039	30
1253	2	1880	12	4287	18,37	55040	30
1324	6,37,39	1883	12	4310	12	55041	30
1325	6	1886	12	4314	12,39	55160	28
1330	6	1904	20	4318	12,37	55170	28
1331	6	1906	20	4322	12	55180	28
1335	6	1908	20	44218	20	56018	32
1339	6	1909	20	44224	20	56024	32
1343	6,39	1910	20	44232	20	56030	32
1345	6	1912	4	45006	20	56036	32
1355	6	1914	4	4515	37	57110	18,37,39
1365	8	1916	4	45211	26	58014	12
1368	8	1918	4	45221	26	58018	12
1370	18	1947	28	46312	18	58022	12
13851	8	1950	20	46313	18	59000	33
1391	8	1957	12	46322	18	59005	33
13930	8	1959	12	47002	36	59010	33
1397	2	1961	12	47003	38	59016	33
1402	2	1992	18	48121	27	59020	33
1405	6	1995	18	48131	26	59024	33
1407	2	1999	18	48200	28	59070	33
1408	2	2001	18	48211	26,39	59072	33
14100	10	2003	18	48212	26	59080	33
1412	2,37,39	2004	35	48213	26	59084	33
14125	10	2005	18	48218	32	59090	33
1413	2	2006	35	48221	26,39	59100	33
1417	2,37,39	2007	18,39	48222	32	59816	33
1418	2	2012	10,37	48240	32,39	61060	32,39
1422	2	2014	10,37	48318	32	71100	10
1423	2	2016	10	48322	32	71101	10
1427	2,37,39	2018	10,37	48350	28	71140	10,37
1428	2	2020	8,39	48450	28	71141	10,39
1432	2	20291	18,37,39	48520	20	71180	10

# CONTACT

## World Headquarters

📍 2100 North Loop Road  
Alameda CA, 94502

☎ (800) 438-8673

✉ customerservice@ettore.com

## Europe

📍 Nieuwe Havenweg 57  
1216 BN Hilversum, Netherlands

☎ +31 6 19 20 79 44

✉ support@ettore-emea.com

Please contact one of our valued distributors for product availability.



@EttoreProductsCompany



*The Professional's Edge Since 1936*

ETTORE, the WINGS design, AQUACLEAN, BACKFLIP, CHAMPION, CONTOURPRO+, EXTEND-A-FLO, GOLDEN GLOVE, GRIP'N GRAB, INTERPRO, MASTER, MICROSWIPE, PRO+, REA-C-H, SCRUB OFF AND SQUEEGEE OFF are registered trademarks in the U.S. Patent and Trademark Office. ETTORÉ, and/or the WINGS design are also registered in Australia, Benelux, Canada, China, Egypt, European Union (EU), France, Germany, Italy, Japan, Spain, Sweden, Switzerland and United Kingdom (UK). INTERPRO is also a registered trademark of the European Union (EU).